

Engaging Community Partners in Health Improvement Planning

CHOICES Community of Practice
Coffee Chat



February 22, 2024

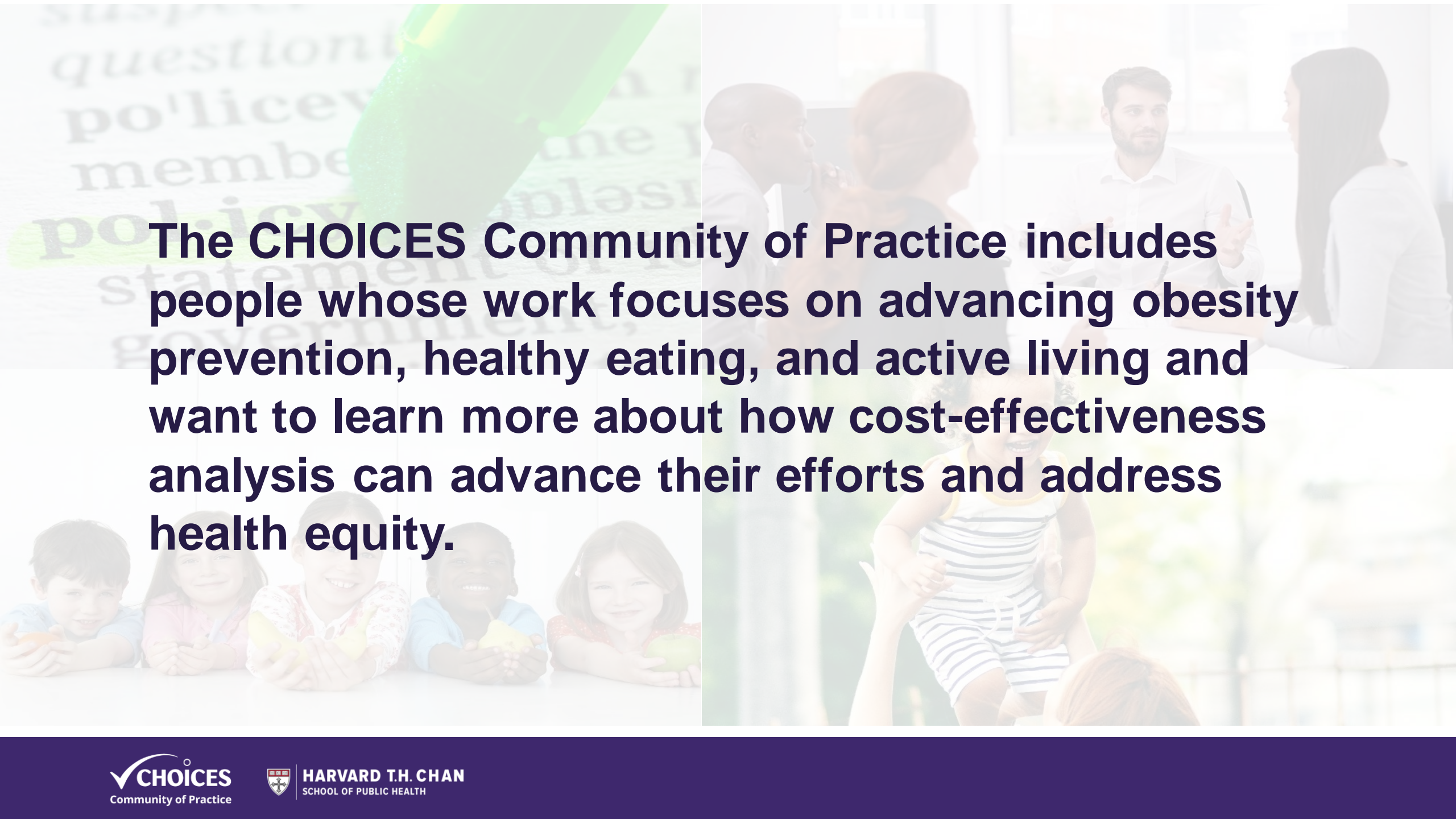
Welcome!

Please share your name, title, & organization in the chat.

Disclaimer & Funding

- The CHOICES Project engages in research and education. The information presented in this discussion today is for educational purposes only and does not necessarily represent the position of any CHOICES Project funders.
- This event is intended to provide information, tools, and resources to inform and educate the audience, and is not an attempt to influence any specific legislation.

This work is supported by The JPB Foundation and the Centers for Disease Control and Prevention (U48DP006376). The findings and conclusions are those of the author(s) and do not necessarily represent the official position of the Centers for Disease Control and Prevention or other funders.



The CHOICES Community of Practice includes people whose work focuses on advancing obesity prevention, healthy eating, and active living and want to learn more about how cost-effectiveness analysis can advance their efforts and address health equity.

Engaging Community Partners in Health Improvement Planning



Anna Clayton, MPH

Senior Program Analyst, Performance Improvement
National Association of County & City Health Officials

MOBILIZING FOR ACTION THROUGH PLANNING AND PARTNERSHIPS

MAPP 2.0

Introduction to the Power Analysis on CHIP Priorities

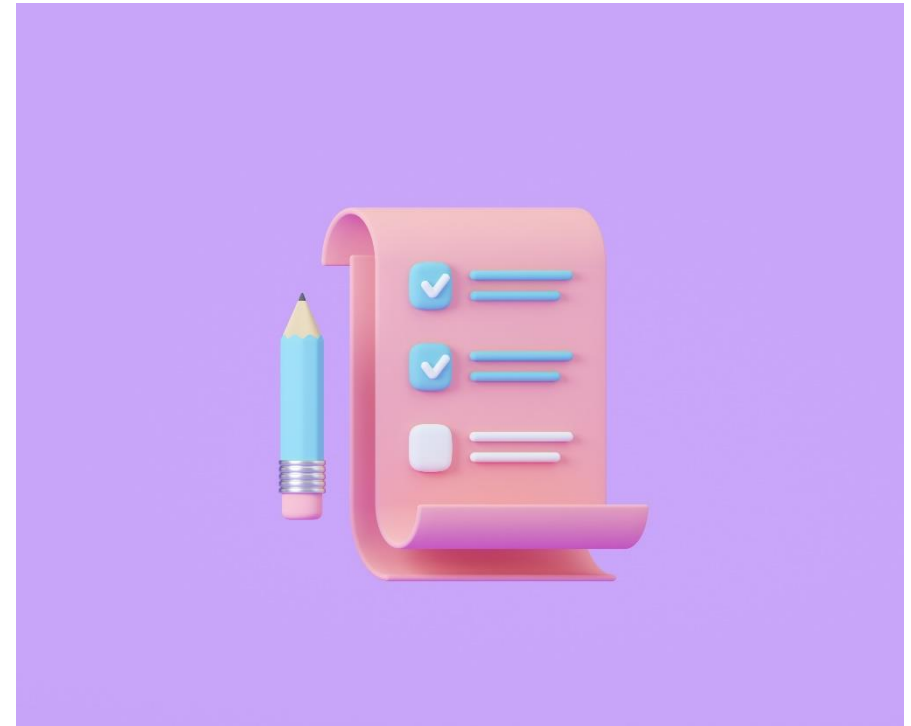
February 2024

National Association of County and City Health Officials

NACCHO is comprised of nearly **3,000 local health departments** across the United States. Our mission is to serve as a **leader**, **partner**, **catalyst**, and **voice** with local health departments.

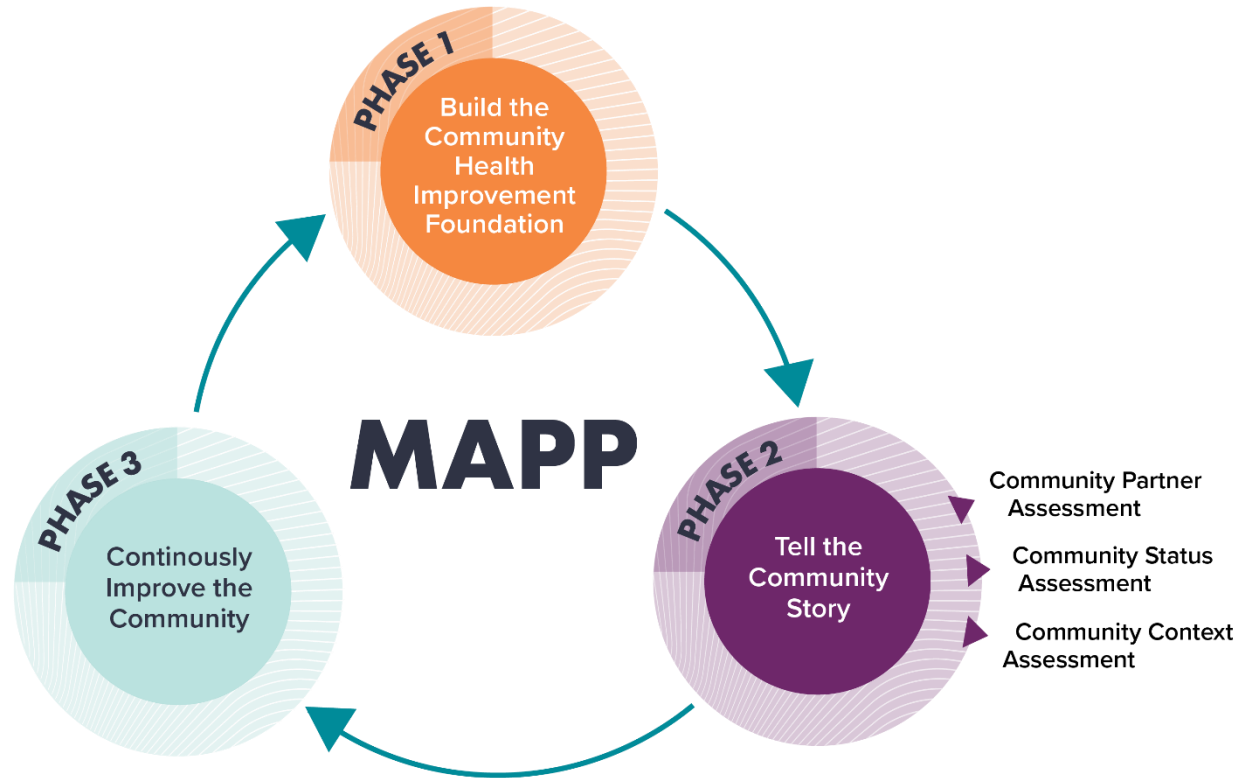
Objectives

- Define the MAPP 2.0 framework for community health improvement
- Define health equity and power in relation to community health improvement
- Explain the purpose of the Power Analysis on CHIP priorities
- Apply the Power Analysis to a healthy eating policy example

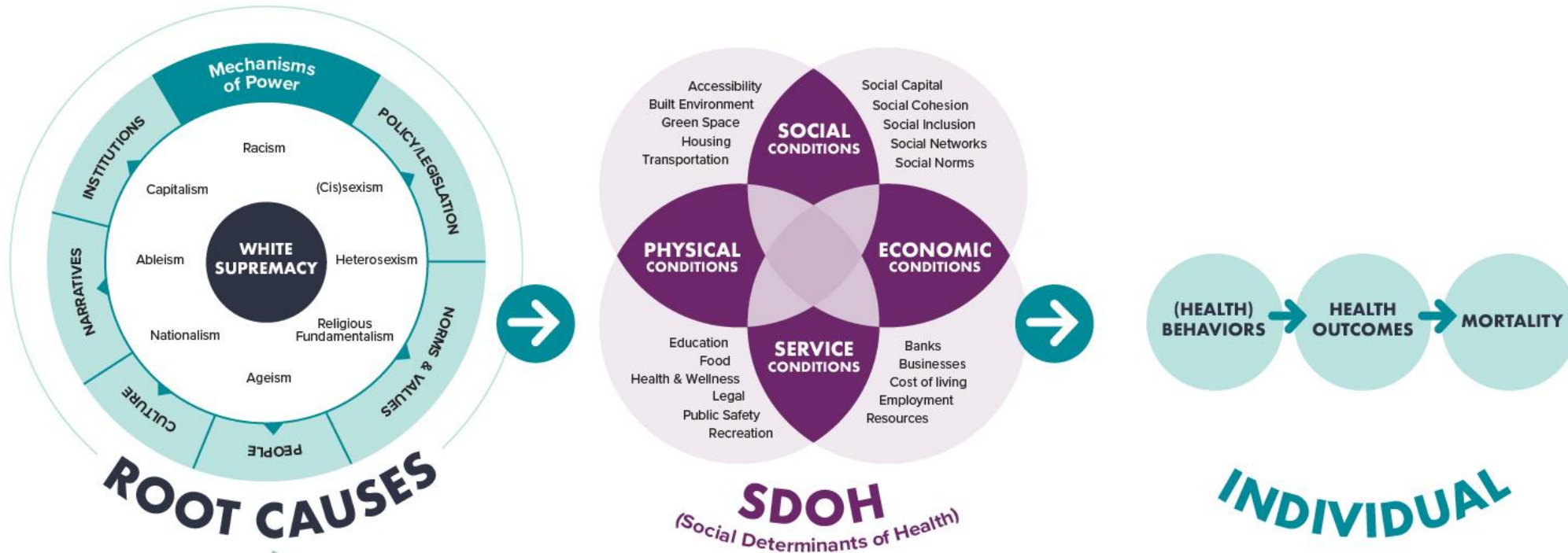


Mobilizing for Action through Planning and Partnership (MAPP) 2.0

A community-driven strategic planning process to improve public health and achieve health equity



HEALTH EQUITY ACTION SPECTRUM



CREATE...

Hierarchies of privilege and oppression

WHICH LEAD TO...

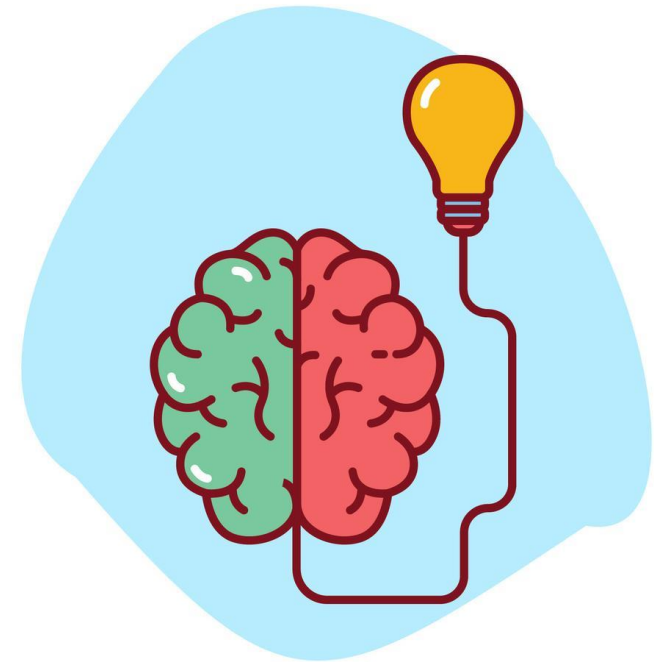
Imbalances in power and access to power

GENERATING...

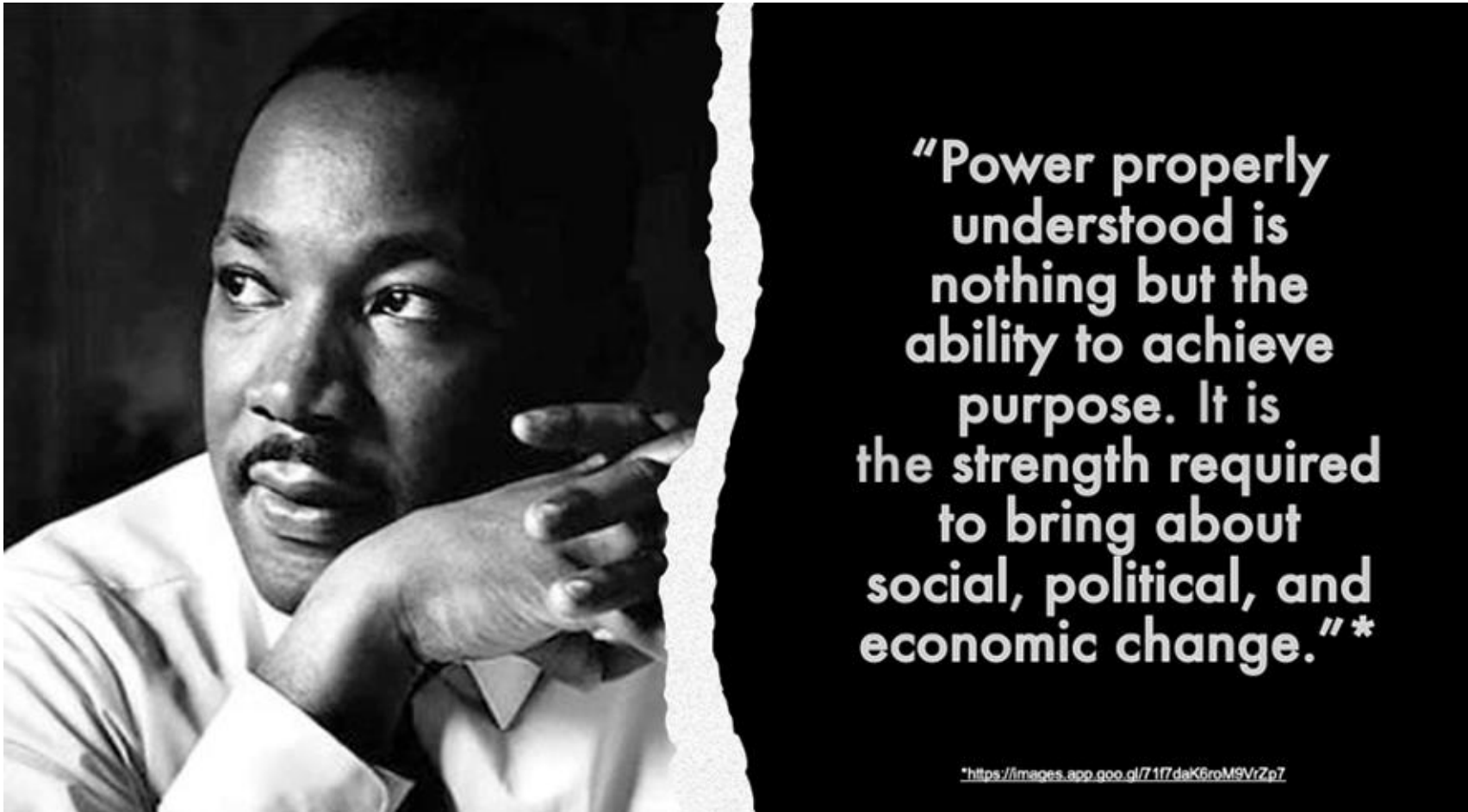
Social injustice

Reflection Question

Share in the chat:
**What words come to mind
when you think about the word
POWER?**



Defining Power



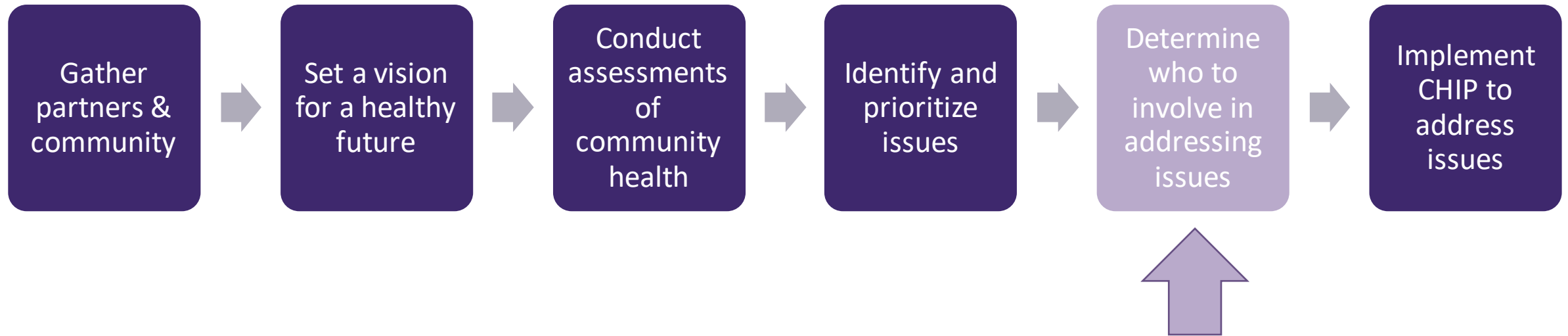
Resource Highlight: Power Analysis on CHIP Priorities

Identify who to involve in addressing CHIP priorities based on who has an **influence** on the issue and who is **impacted** by the issue.



When is the Power Analysis used?

Key steps within MAPP:



Steps of the Power Analysis

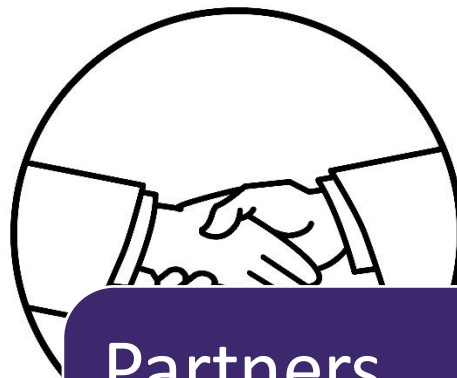
1. Identify those who could **positively or negatively impact** the success of the priority issue
2. Analyze each stakeholder according to their **power and influence** over the issue
3. Determine **who to engage**, especially those who support the issue with power to effect change

Who has Power? Who are our Partners & Opponents?



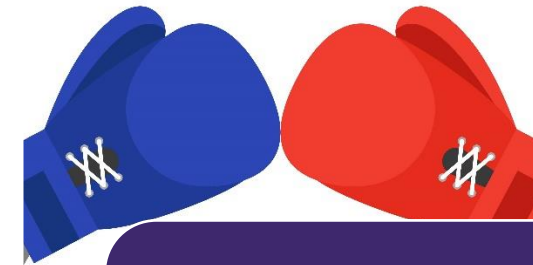
Power

- Has ability to impact
- Positive or negative



Partners

- Supportive
- Works in favor of progress



Opponents

- Not supportive
- Works against progress

In relation to the priority issue

Complete Partners and Opponents Table

For each individual or organization identified, complete the following information:

Category	Description
Stakeholder	Name/Organization name
Impact	How are they impacted by the issue?
Relevant power(s)	What type of power do they have related to this issue?
Accountability	To whom do they report? Who determines their budget?
Influenced By	Whom are they ultimately influenced by?
Alignment	Is their work aligned with this issue? Are they supportive of it or against it?

Example: Healthy Meals in County Schools

Sunshine County Health Coalition

Our Priority

By 2025, implement district-wide policy to serve **Healthy School Meals for All** at no cost to all students.



Who has the power to effect this change?
Who will be our partners in this effort?
Who will be our opponents?

Example: Healthy Meals in County Schools



Priority

By 2025, implement district-wide policy to serve Healthy School Meals for All at no cost to all students.

Potential Partner:

Sunshine County Children's Health Solutions

- ✓ How are they impacted by the issue?
- ✓ What type of power do they have related to it?
- ✓ To whom do they report? Who determines their budget?
- ✓ Whom are they ultimately influenced by?
- ✓ Are they supportive of this priority or against it?

Example: Healthy Meals in County Schools

Priority: By 2025, implement district-wide policy to serve Healthy School Meals for All at no cost to all students.

Category	Description
Stakeholder	Sunshine County Children's Health Solutions (FRAC)
Impact	Aligns with policy priorities
Relevant power(s)	Advocacy resources and access, access to data, network of partners
Accountability	Board of Directors
Influenced By	Funders, funding priorities
Alignment	Supportive of the priority

Analyze Stakeholders by Power/Support



Discussion: Share thoughts in the chat

Which of these elements about power would be the most helpful to you to explore with your partners?

Impact

How are they impacted by the issue?

Relevant power(s)

What type of power do they have related to this issue?

Accountability

To whom do they report? Who determines their budget?

Influenced By

Whom are they ultimately influenced by?

Alignment

Is their work aligned with this issue? Are they supportive of it or against it?

Additional Resource: Stakeholder and Power Analysis

Goals:

- Do a Stakeholder and Power Analysis to understand the characteristics of all that have a “stake” in MAPP and CHI efforts
- Use stakeholder characteristics to identify and build relationships with community members and organizations

Supplemental Materials

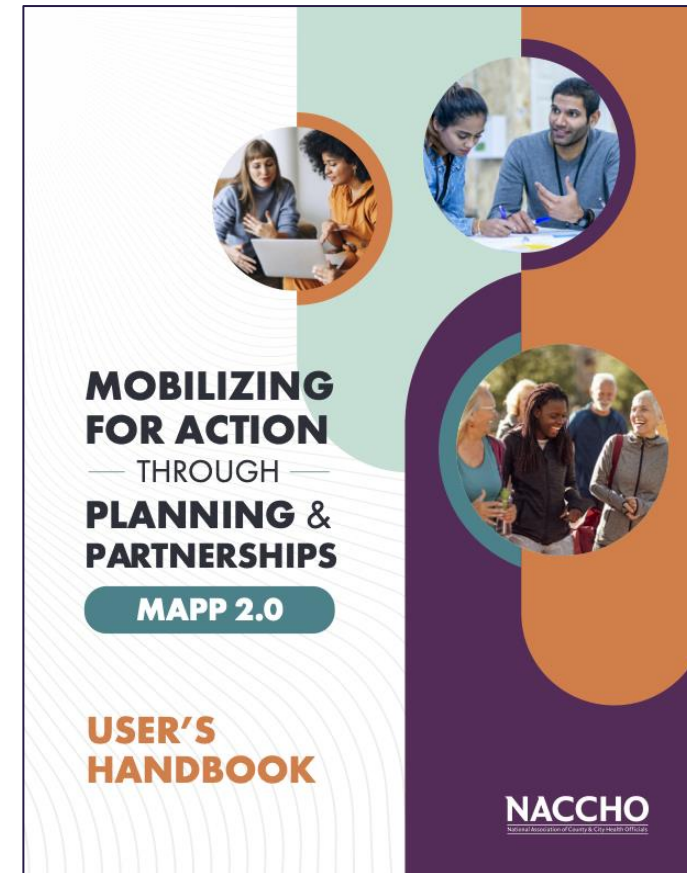
- Stakeholder Brainstorm Toolkit
- Tips for Planning Meetings
- Stakeholder Analysis Table



MAPP 2.0 Resources

Visit naccho.org/mapp

- MAPP handbook & tools
- MAPP Network Virtual Community
 - 11 asynchronous trainings
 - Open discussion board
 - Recommended webinars & tools
- MAPP 2.0 Regional Trainings
 - March – Cleveland, OH
 - April – Albuquerque, NM
 - June – Portland, OR



Email aclayton@naccho.org or mapp@naccho.org

Questions?

THANK

YOU

Join our next coffee chat on
Thursday, March 28th at 1:00pm ET



CONTACT US

For more information contact
choicesproject@hsph.harvard.edu

Register to join at
choicesproject.org/comm-of-practice